

UPSMON PRO Manager V1.25

Central Ups Monitoring Software

User's Manual

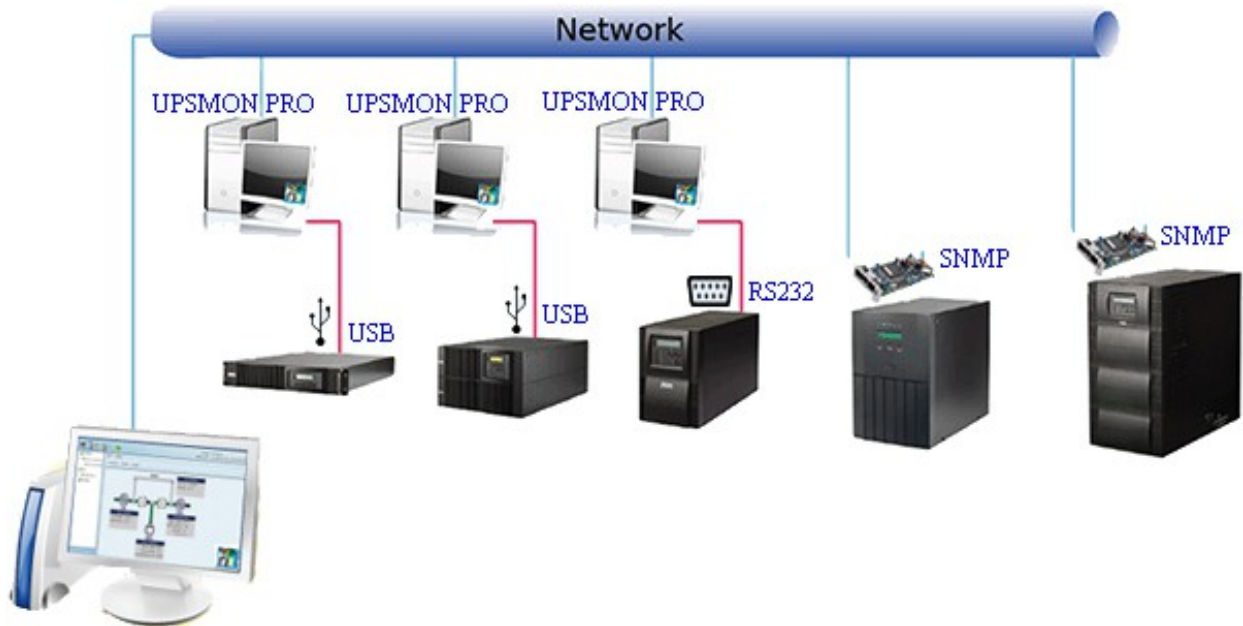
Contents

<u>0. OVERVIEW</u>	<u>3</u>
<u>A. UPS Connection Setup</u>	<u>5</u>
<u>B. UPS Monitoring</u>	<u>6</u>
<u>C. UPS Data Log</u>	<u>8</u>
<u>D. UPS Event Log</u>	<u>9</u>
<u>E. Email Notification</u>	<u>10</u>

0. OVERVIEW

UPSMON PRO Manager cooperates with below two components :

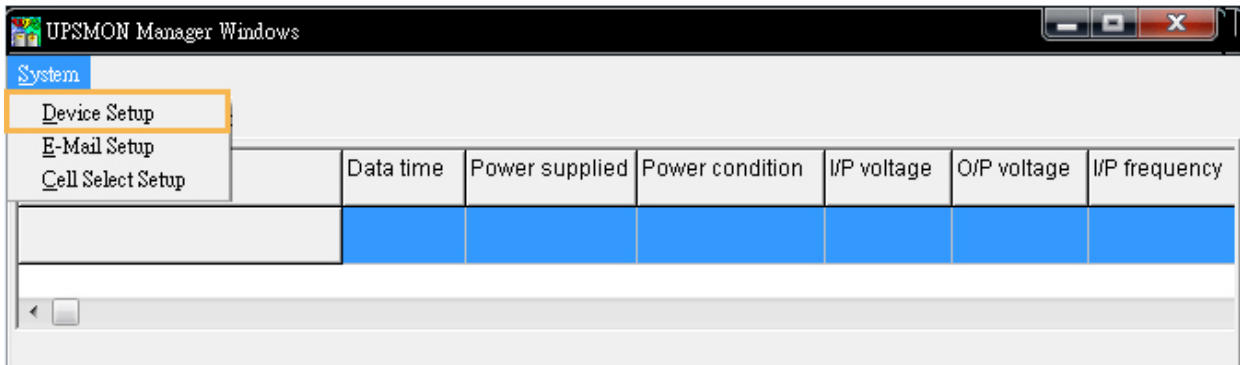
1. **UPSMON PRO** : Usb or serial port connect ups / OS shutdown / Ups control
2. **SNMPCard** : Internet access / Ups web remote control / Ups web remote monitoring



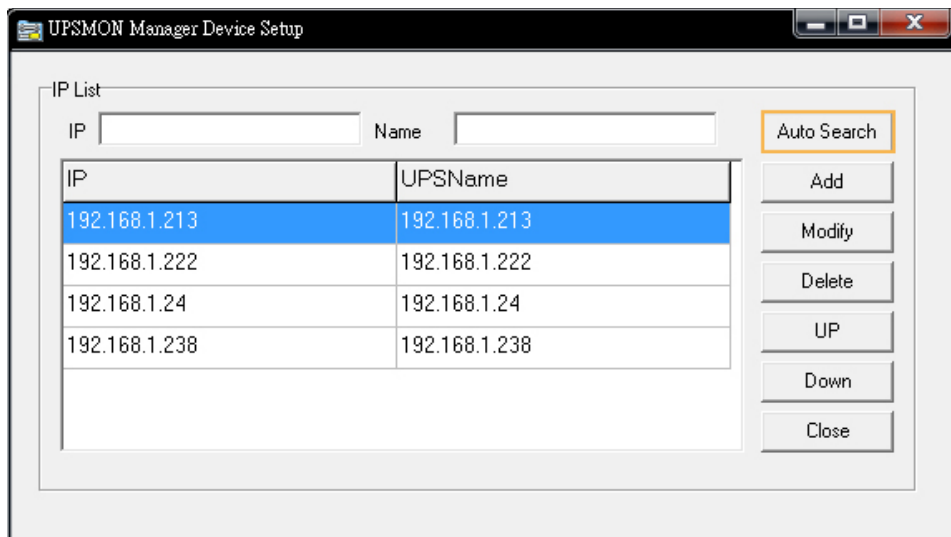
UPSMON PRO Manager Windows										
System										
UPS List 210.202.53.144 210.202.53.136 210.202.53.150 210.202.53.134 210.202.53.142 210.202.53.146 10.192.136.232										
UPS name	Data time	Power supplied	Voltage	Power condition	Battery capacity	Battery status	UPS load	Backup time	IP	
210.202.53.144	10:31:56	Utility	118	Normal	100	Normal	17	36	210.202.53.144	
210.202.53.136	10:31:56	Utility	120	ON line	100	Normal	3	---	210.202.53.136	
210.202.53.150	10:31:57	Utility	231	ON line	100	Normal	0	123	210.202.53.150	
210.202.53.134	10:31:58	Utility	214	ON line	100	Normal	0	---	210.202.53.134	
210.202.53.142	10:31:59	Utility	120	ON line	100	Normal	0	168	210.202.53.142	
210.202.53.146	10:32:00	Utility	122	Boost	100	Normal	13	---	210.202.53.146	
10.192.136.223	10:32:01	Utility	119	ON line	100	Normal	0	168	10.192.136.223	
10.192.136.224	10:32:02	Utility	230	ON line	100	Normal	0	36	10.192.136.224	
10.192.136.225	10:32:04	Utility	120	ON line	100	Normal	0	---	10.192.136.225	
10.192.136.232	10:32:04	Utility	119	ON line	100	Normal	3	168	10.192.136.232	

A. Ups Connection Setup

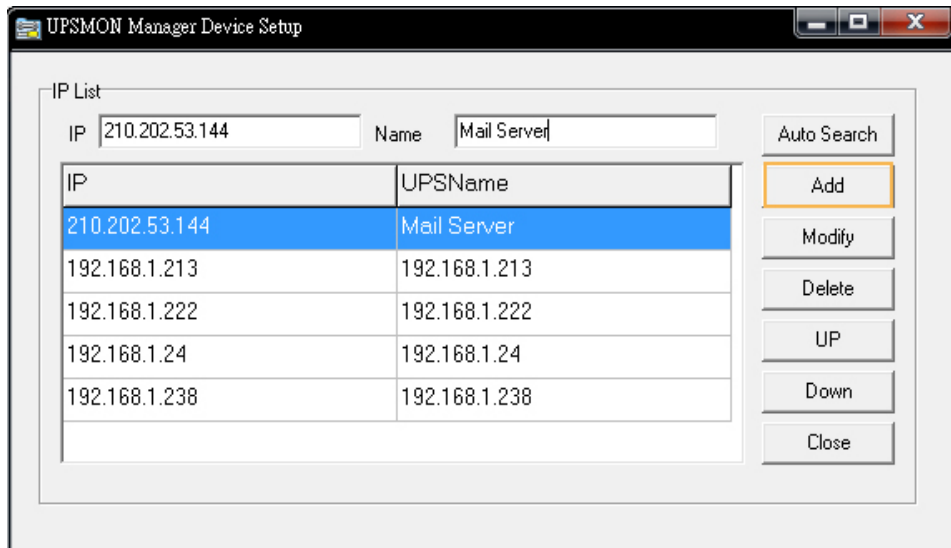
1. System >> Device Setup



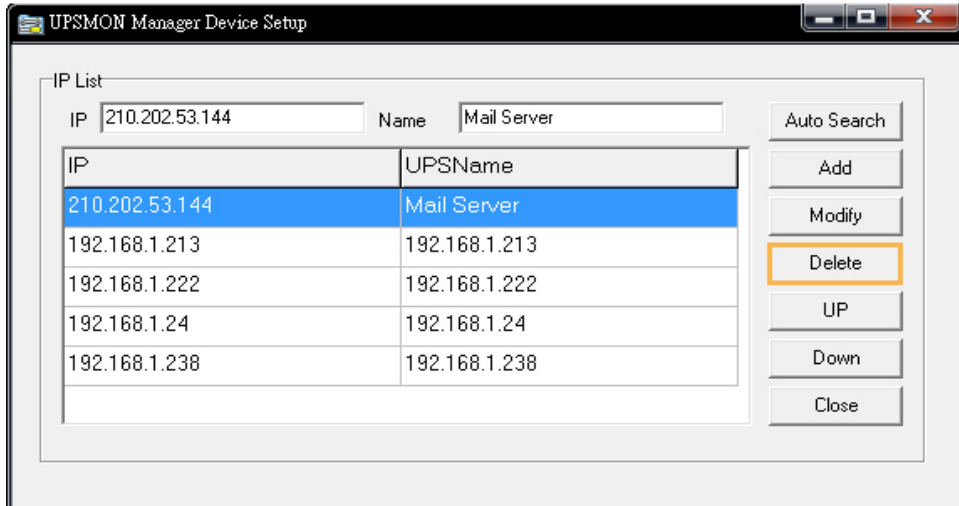
2. **Auto Search** : Auto search and include all the ups within the LAN



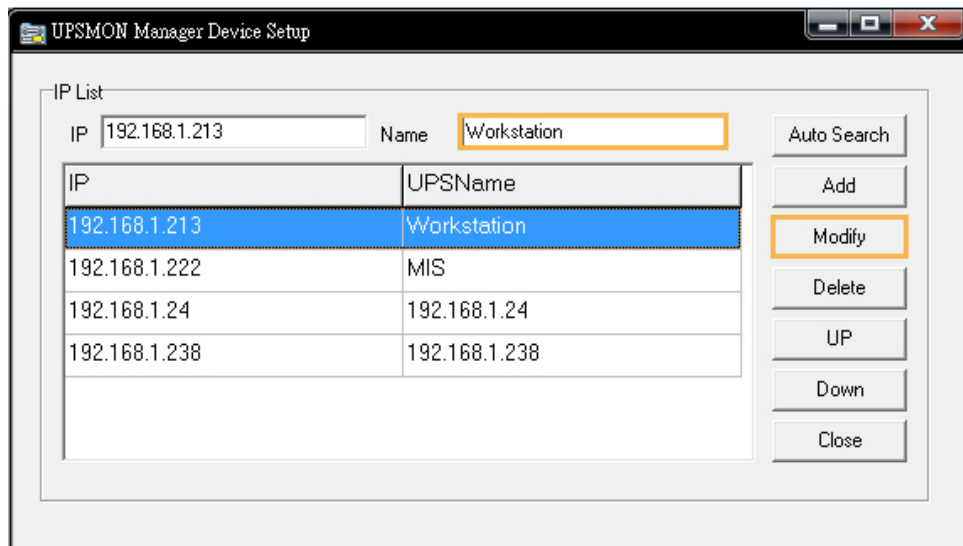
3. **Add** : Add ups connection by specific IP



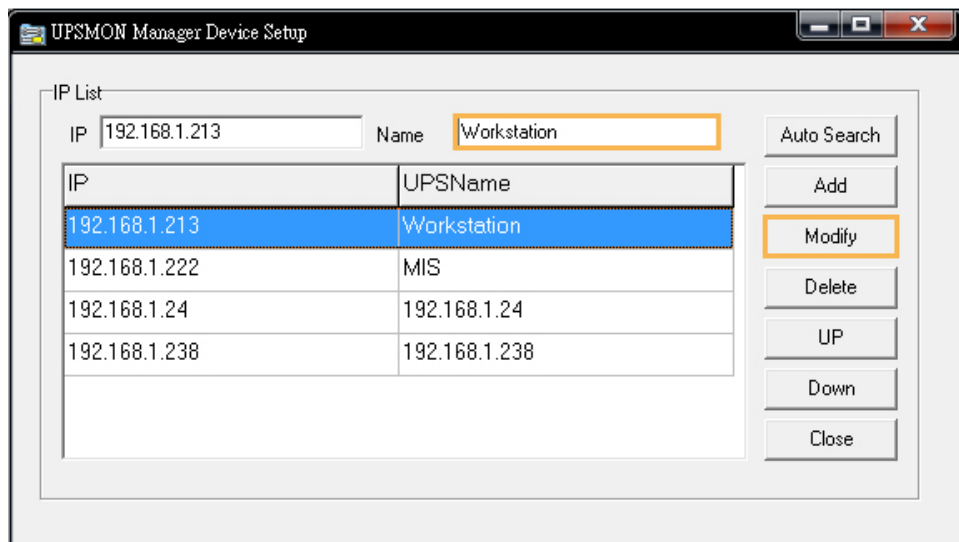
4. **Delete** : Remove ups connection from UPSMON PRO Manager



5. **Modify** : Rename or change connection IP













6. **UP / Down** : Adjust the sequence of ups connection





B. UPS Monitoring





Main Screen : The main screen of UPSMON PRO Manager shows the following :

System						
UPS List Traffic UPS1 Traffic UPS2 Work Station 1 Work Station 2 Work Station 3						
UPS name	Data time	Power supplied	Power condition	Battery status	Battery capacity	Backup time
 Traffic UPS1 	15:21:37	Battery Power	Power failure	Battery discharging	98	164
 Traffic UPS2 	15:21:38	AC Utility Power	On line	Normal	100	---
 Work Station 1 	15:21:40	AC Utility Power	Normal	Normal	100	36
 Work Station 2 	15:21:41	AC Utility Power	Boost	Normal	0	---
 Work Station 3 	15:21:37	AC Utility Power	On line	Normal	100	168

1. Connection Source :

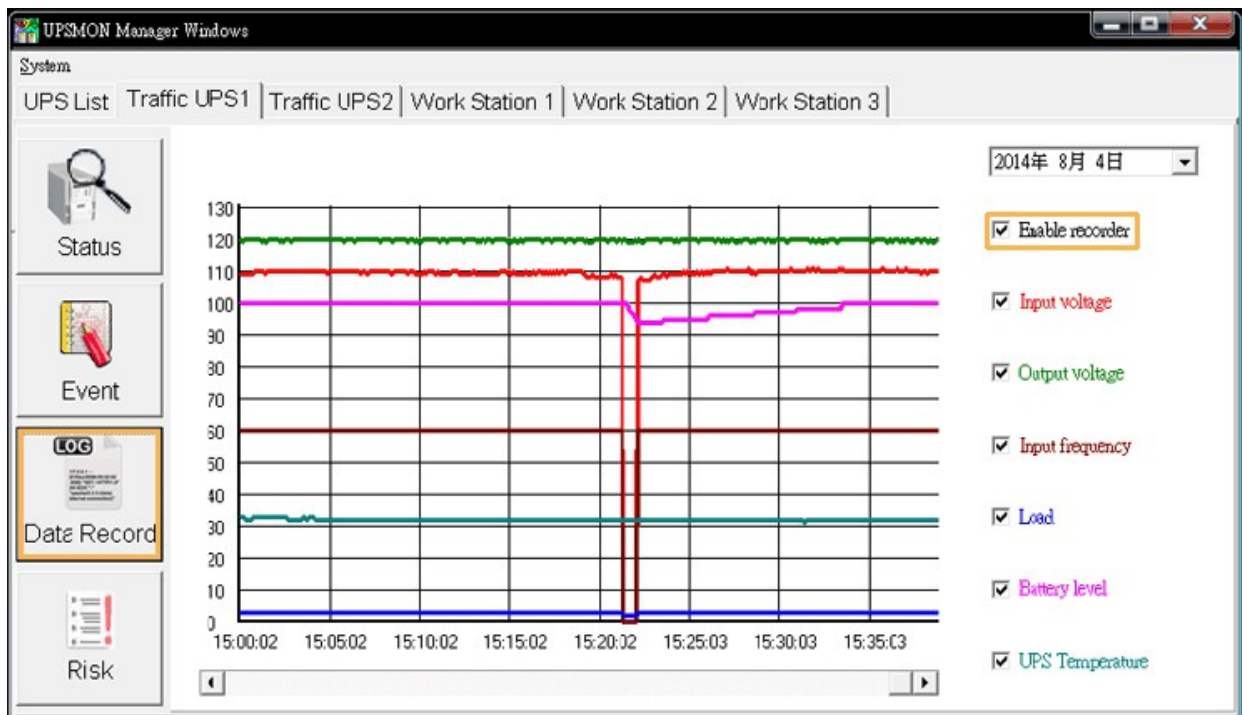
	This connection is from SNMPCard
	This connection is from UPSMON PRO

2. UPS Status

	The ups is operating normally
	Lost this ups connection
	Th current power source is battery power
	A critical condition exists (Ex : Battery Low)

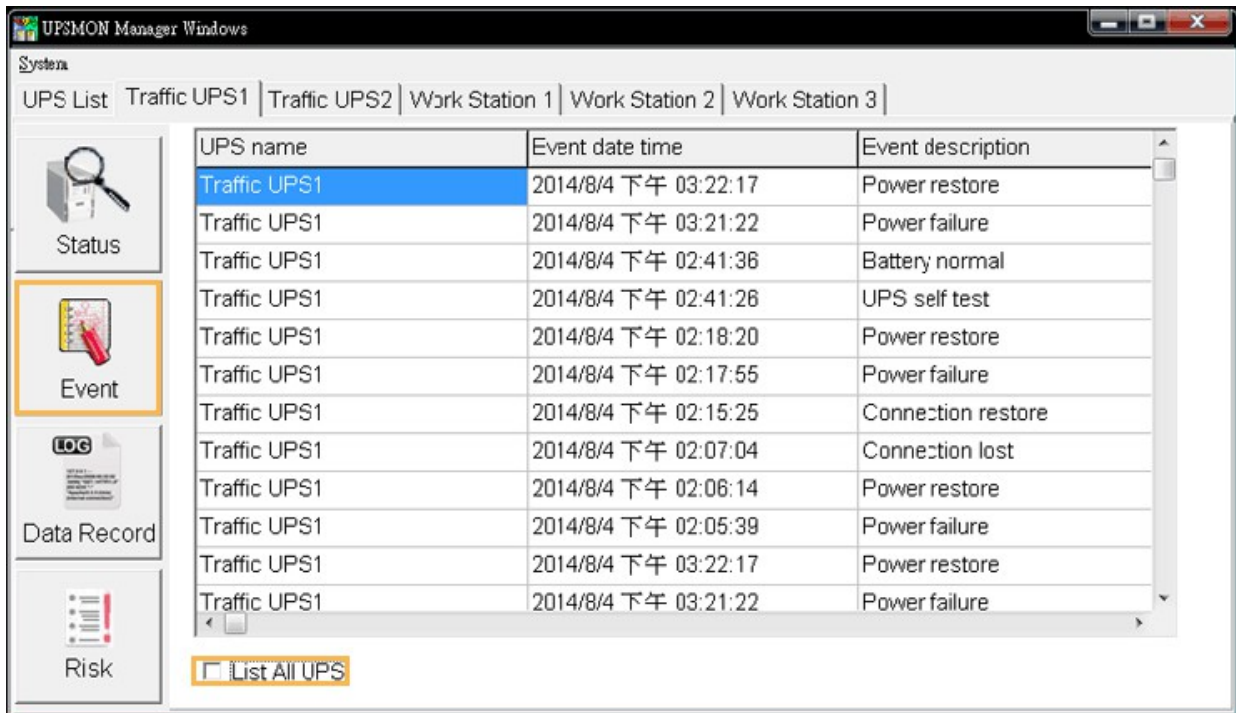
C. UPS Data Log

1. **Enable recorder** : It starts to record the data and presents by the diagram
2. **Data retrieve** : Select the date from *calendar* and the diagram will reload from that day



D. UPS Event Log

1. **Event List** : It shows you all events which this ups occurred
2. **List All UPS** : It will list all ups events by the time



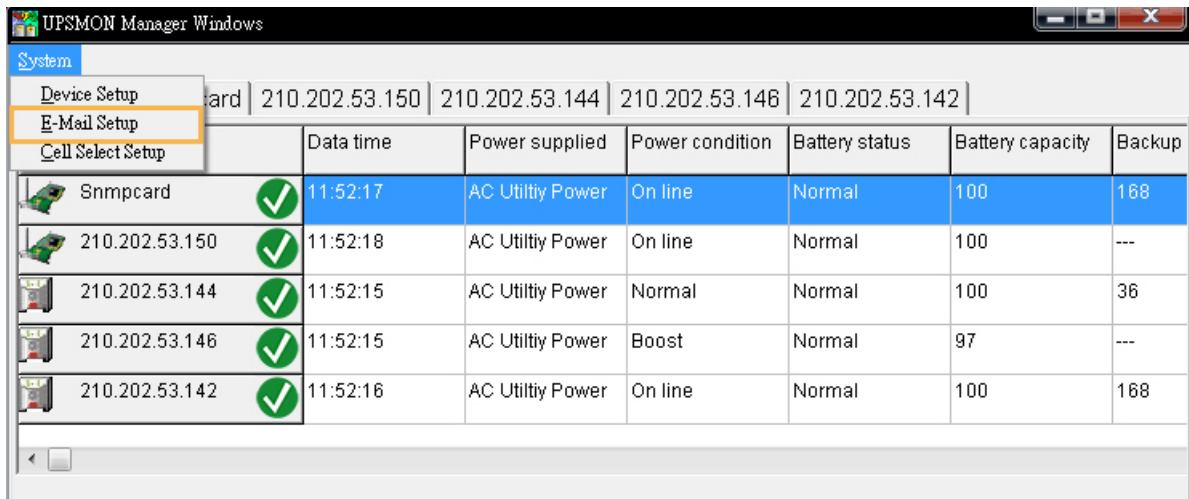
The screenshot shows the UPSMON Manager Windows interface. The main window displays a table of events for Traffic UPS1. The table has three columns: UPS name, Event date time, and Event description. The events are listed in chronological order from top to bottom. The first event is highlighted in blue.

UPS name	Event date time	Event description
Traffic UPS1	2014/8/4 下午 03:22:17	Power restore
Traffic UPS1	2014/8/4 下午 03:21:22	Power failure
Traffic UPS1	2014/8/4 下午 02:41:36	Battery normal
Traffic UPS1	2014/8/4 下午 02:41:26	UPS self test
Traffic UPS1	2014/8/4 下午 02:18:20	Power restore
Traffic UPS1	2014/8/4 下午 02:17:55	Power failure
Traffic UPS1	2014/8/4 下午 02:15:25	Connection restore
Traffic UPS1	2014/8/4 下午 02:07:04	Connection lost
Traffic UPS1	2014/8/4 下午 02:06:14	Power restore
Traffic UPS1	2014/8/4 下午 02:05:39	Power failure
Traffic UPS1	2014/8/4 下午 03:22:17	Power restore
Traffic UPS1	2014/8/4 下午 03:21:22	Power failure

At the bottom of the window, there is a checkbox labeled "List All UPS" which is currently unchecked.

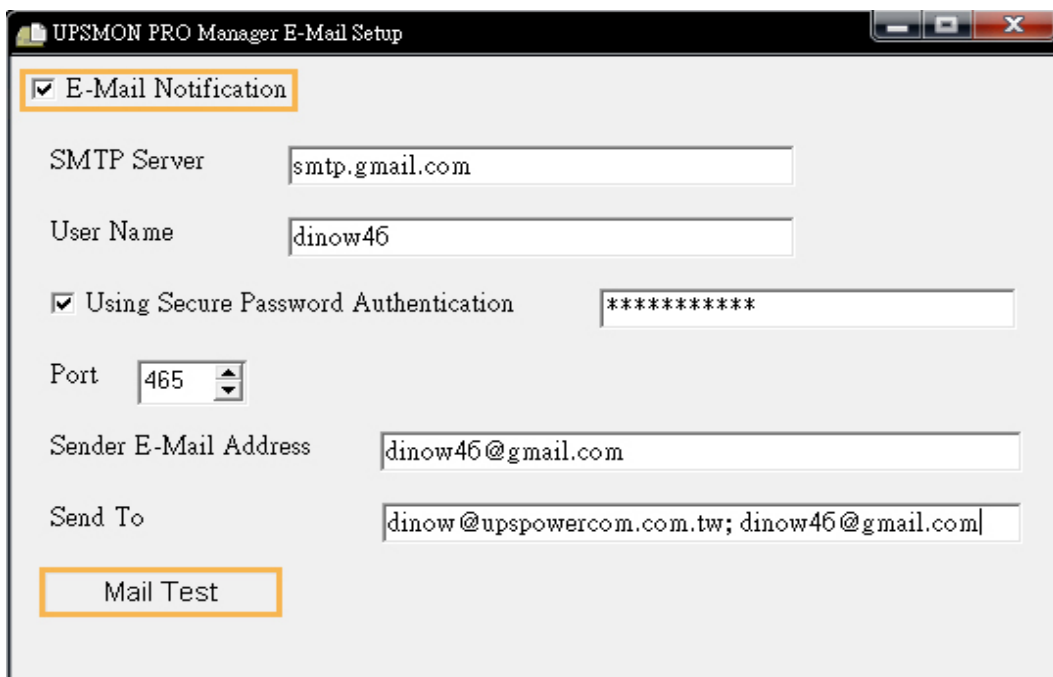
E. Email Notification

1. System > E-Mail Setup



		Data time	Power supplied	Power condition	Battery status	Battery capacity	Backup
Snmpcard	✓	11:52:17	AC Utility Power	On line	Normal	100	168
210.202.53.150	✓	11:52:18	AC Utility Power	On line	Normal	100	---
210.202.53.144	✓	11:52:15	AC Utility Power	Normal	Normal	100	36
210.202.53.146	✓	11:52:15	AC Utility Power	Boost	Normal	97	---
210.202.53.142	✓	11:52:16	AC Utility Power	On line	Normal	100	168

2. Enable and fill out the content



E-Mail Notification

SMTP Server:

User Name:

Using Secure Password Authentication:

Port:

Sender E-Mail Address:

Send To:

SMTP Server : It identifies the name of the SMTP server (for example, mail.server.com)

Sender E-Mail Address : It identifies an e-mail that the recipient sees, i.e., the e-mail account name at the SMTP server to be used to send notifications (for example, admin@mail.server.com)

Send To : It identifies the e-mail addresses of the recipients you want notified when events occur, (for example, user@mail.server.com)

3. With **Mail Test** button, it help you to check the mail configuration and smtp connection

